

16. July 2024

If you use a BTAC box (MS/2, COMSERVER, SMARTSERVER) for the data supply of your ODIS tester today, it must be replaced by a D³ Edge Box at short notice. You can get the D³ Edge Box from your ICT provider, who will provide you with the BTAC Box today.

If you have already ordered a D³ Edge Box but have not yet received it, or if you decide not to use a D³ Edge Box, we offer a corresponding UWA "D³ Web Infrastructure" without an Edge Box.

For **new vehicle generations from AUDI AG**, starting with the **Audi Q6 e-tron**, the use of your ODIS Tester is generally either:

- a. A D³ Edge Box or
- b. The use of a hardware-free data supply provided by Volkswagen AG, the "D³ Web Infrastructure", is required.

In order to use the "D³ Web Infrastructure", the following settings are required in the ODIS system: In the "Admin" settings, under the "Connections" tab and in the "Brand settings" area, the connection type for all brands must be set to "Internet". Without a local Internet connection and via the CPN, a connection to the "D³ Web Infrastructure" is not possible.

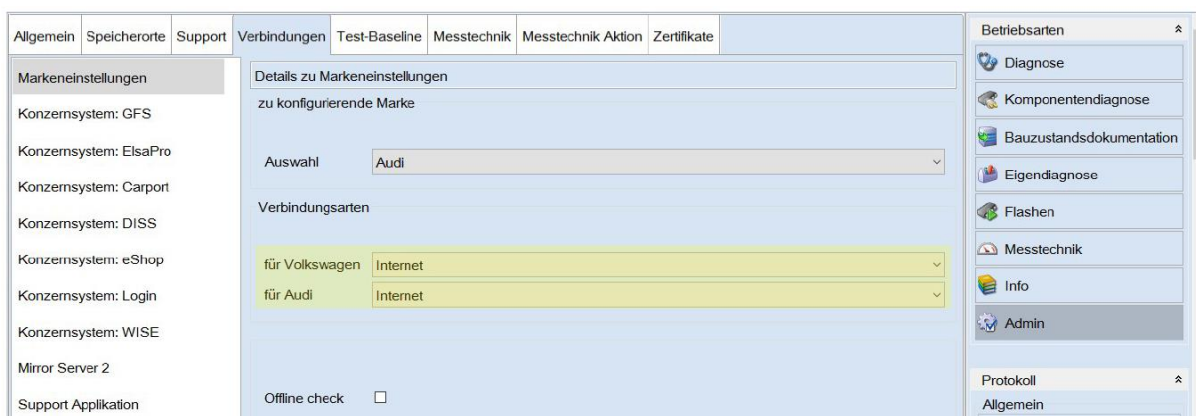


Figure 1 Settings for using the temporary backup solution without an edge box

In addition, the item "D³ Web Infrastructure" must be activated in the "Mirror Server 2" area.

VOLKSWAGEN

AKTIENGESELLSCHAFT

The screenshot displays the 'Verbindungen' (Connections) tab in the Volkswagen diagnostic software. The left sidebar shows a list of settings categories, with 'Mirror Server 2' selected. The main area is titled 'Details zu Mirror Server 2' and contains the following fields:

- Mirror Server URL: Auswählen...
- Mirror Server Anwender:
- Mirror Server Passwort:
- Timeout:
- Timeout für die D³ UUID Abfrage:
- Timeout D³ UUID Abfrage [s]:
- D³ Web-Infrastruktur verwenden:
- D³ Web-Infrastruktur verwenden:

The right sidebar shows the 'Betriebsarten' (Operating Modes) menu, with 'Admin' selected. Below it, the 'Protokoll' (Log) section is visible, showing options for 'Allgemein', 'Speichern', and 'Drucken'.

Figure 2: Settings for using the "D³ Web Infrastructure" without an Edge Box

SUPPLEMENT FOR VOLKSWAGEN COMMERCIAL VEHICLE DEALERS

In addition to the above communication, further settings are necessary for dealers of **Volkswagen Commercial Vehicles** :

In the "Mirror Server 2" area, however, the option "Use D³ Web Infrastructure" must be deactivated. Instead, the following URL must be entered under the item "Mirror Server URL": <https://webfd.ft.europe.d3vw.com/>.

The screenshot shows a web-based configuration interface for a Volkswagen Commercial Vehicle Dealer. The interface is divided into several tabs: Allgemein, Speicherorte, Support, Verbindungen, Test-Baseline, Messtechnik, Messtechnik Aktion, and Zertifikate. The 'Verbindungen' tab is active, showing settings for 'Details zu Mirror Server 2'. The 'Zugangsdaten' section includes a 'Mirror Server URL' field with the value 'https://webfd.ft.europe.d3vw.com/' and an 'Auswählen...' button. Below this are fields for 'Mirror Server Anwender' and 'Mirror Server Passwort'. The 'Timeout' section includes 'Timeout [s]' (120) and 'Timeout für die D³ UUID Abfrage' (5). The 'D³ Web-Infrastruktur verwenden' section has a checkbox labeled 'D³ Web-Infrastruktur verwenden' which is currently unchecked. At the bottom, there is a note 'Einstellungen nur für unabhängige Wirtschaftsakteure' and a 'Logon GRP' checkbox which is also unchecked. A sidebar on the left lists various system settings like 'Markeneinstellungen', 'Konzernsystem: GFS', etc., with 'Mirror Server 2' highlighted.

Figure 3: Settings for the use of the "D³ Web Infrastructure" without Edge Box for Volkswagen Commercial Vehicle Dealers

In addition, the value "de.volkswagen.odis.vaudas.infoservices.grp.al-ways_add_grp_id_token_for_uuid_request" must be set to "true" in the "Config.ini" of ODIS. By default, this value is set to false.

The default path of the "Config.ini" on the local machine for the ODIS service is "C:\Pro-gramData\OS\configuration".